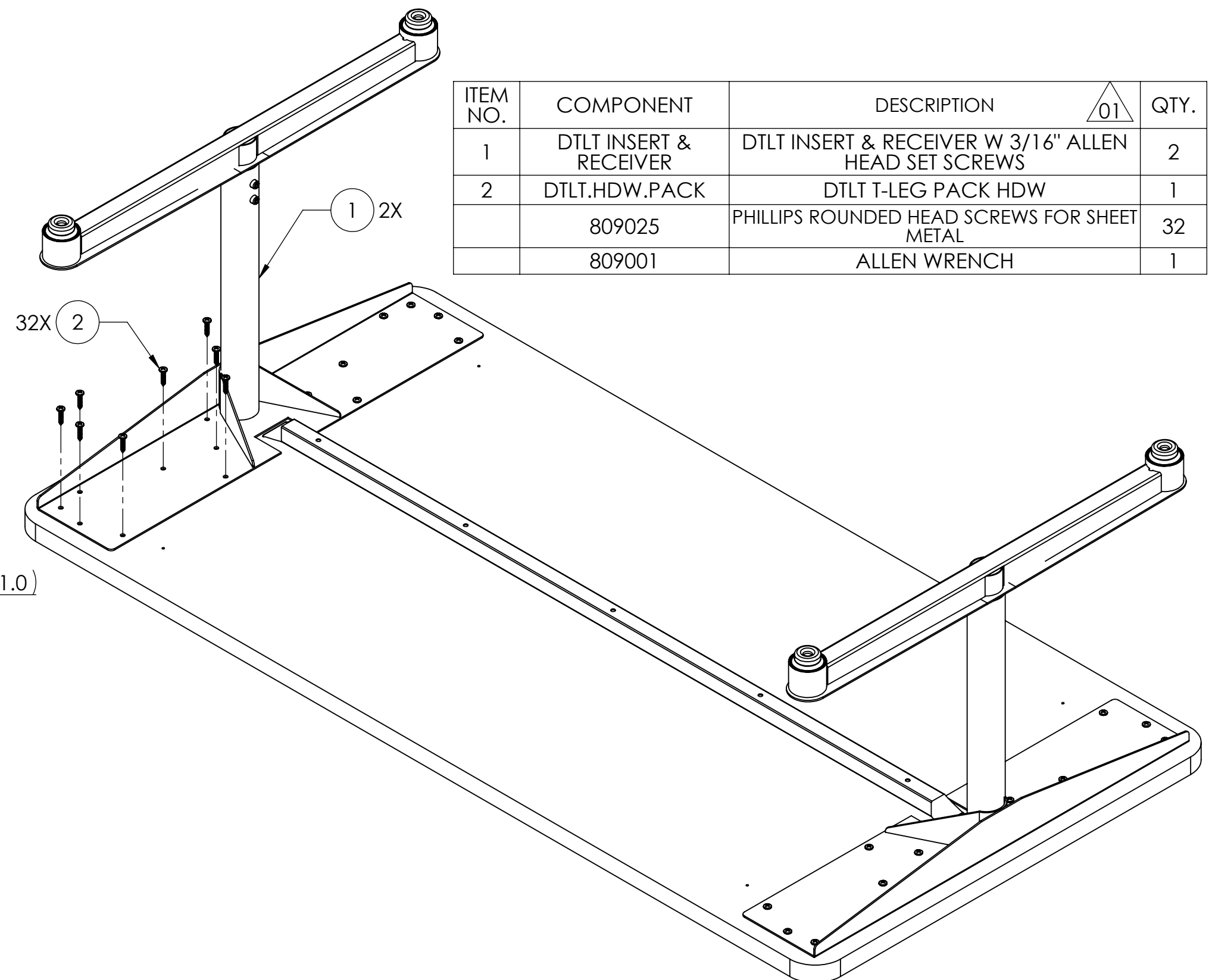
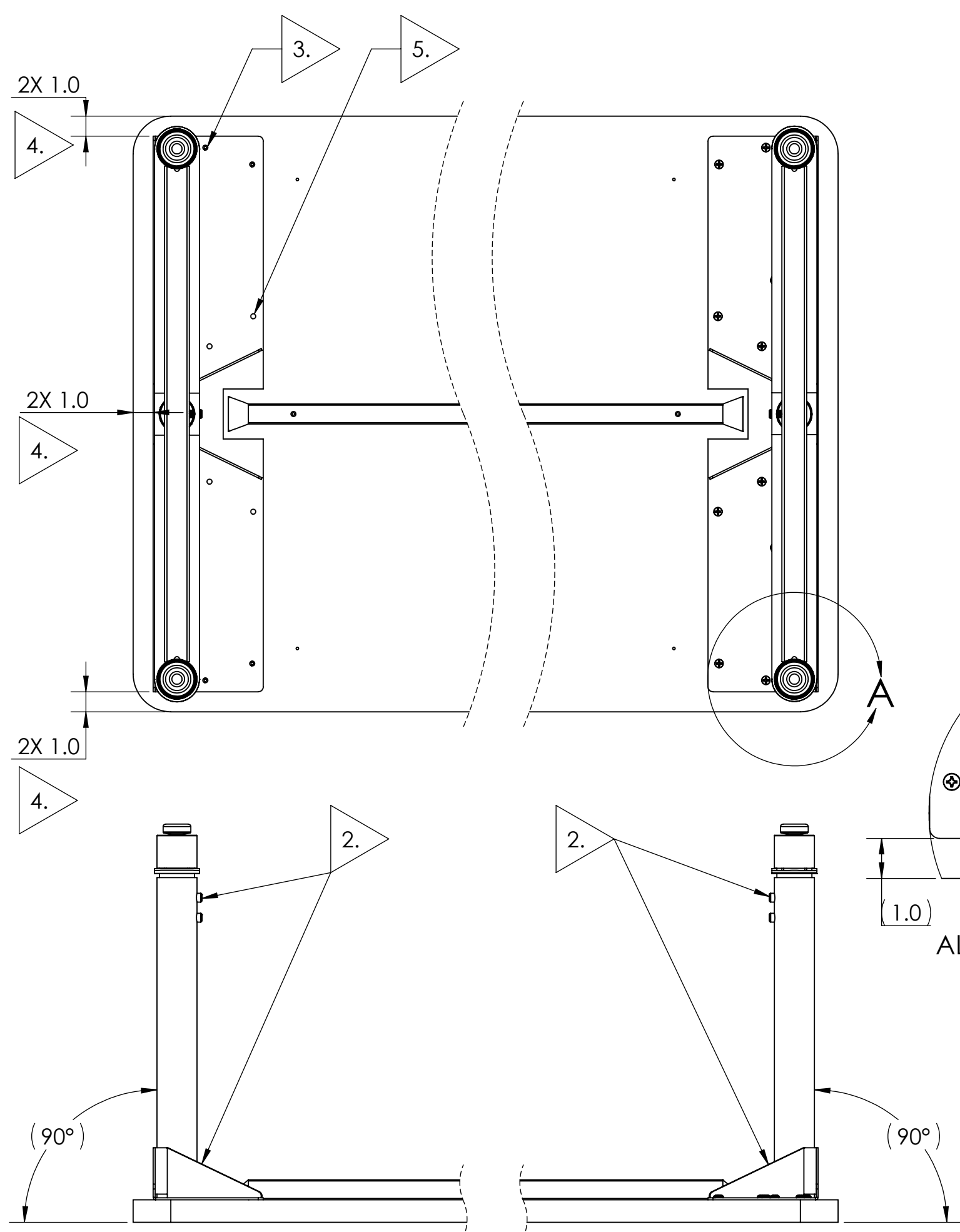



**NOTES:**

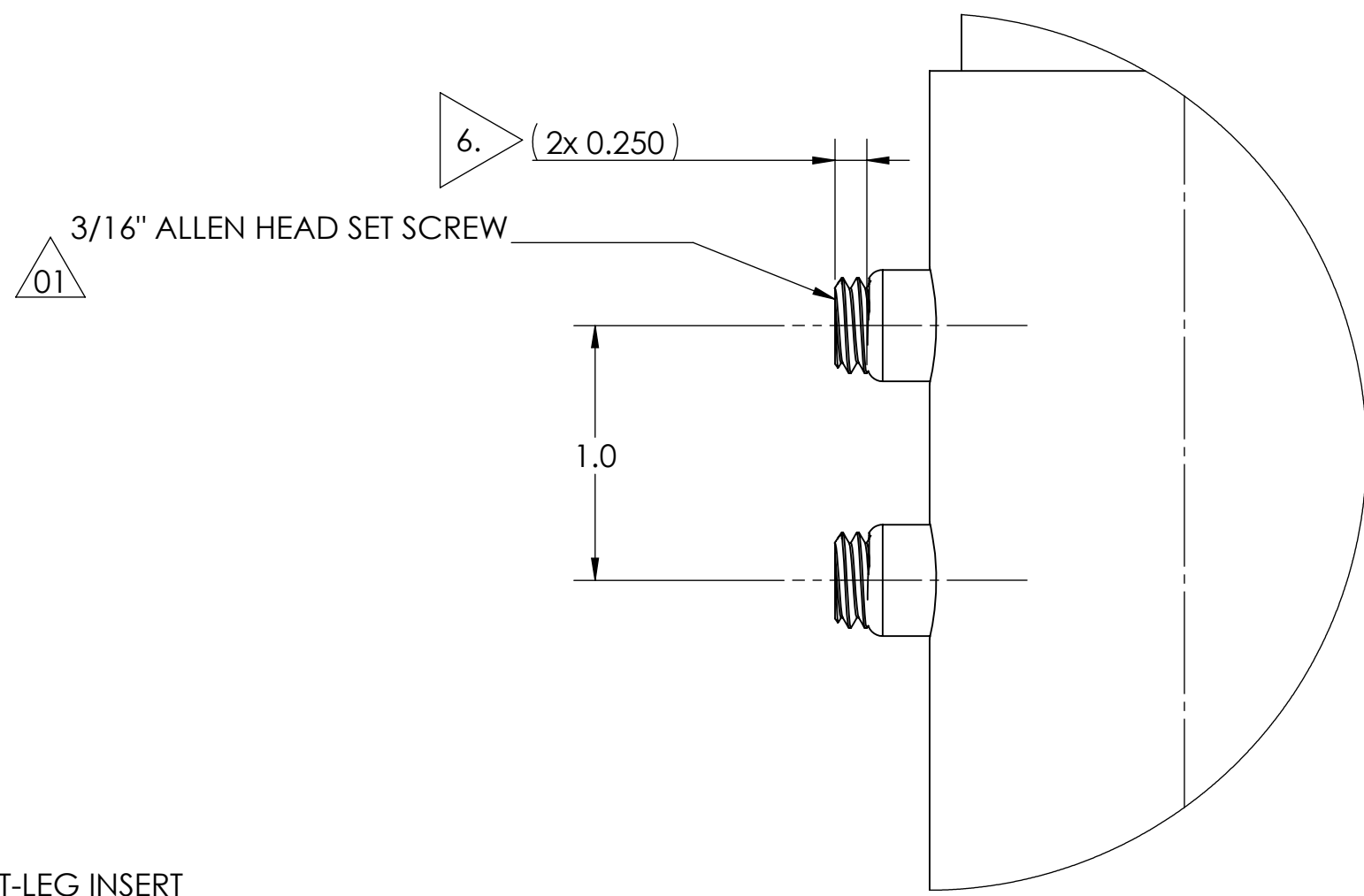
1. RECOMMENDED TOOLING REQUIREMENTS FOR INSTALLATION:
  - PHILLIPS HEAD SCREW DRIVER OR IMPACT DRILL
  - 3/16" DRILL BIT
  - TIGHTEN ALL FASTENERS WITH TORQUE OF **20 in.lbs.**
  - CARDBOARD OR SOFT MATERIAL TO PROTECT THE WORK SURFACE OF THE TOP DURING T-LEG INSTALLATION (TOP WORK SURFACE WILL NEED TO FACE DOWN. (SEE BELOW)
2. ALIGN T-LEG RECEIVER SUPPORT PLATE HOLES SO THAT THEY ARE ALIGNED WITH MOST OF THE TOP'S PRE-DRILLED HOLES. T-LEG'S ARE ARRANGED TO WHERE SET SCREWS AND GUSSETS FACE EACHOTHER. (SEE BELOW)
3. WITH CORRECT HOLE ALIGNMENTS IN PLACE, DTLT RECEIVER SUPPORT PLATE EDGE SITS APPROXIMATELY 1.0" AWAY FROM TABLE TOP EDGE. (SEE BELOW)
4. **FIRST** APPLY REQUIRED SCREWS FROM HARDWARE PACK INTO **OUTER PRE-DRILLED HOLES**. THIS IS IMPORTANT TO PERFORM BEFORE NEXT STEP. (QTY OF 20)
5. APPLY SCREWS TO **INNER HOLES** NEAR GUSSET LAST WHICH ARE **NOT PRE-DRILLED**. THIS OPERATION WILL REQUIRE IMPACT DRILL FOR SCREW INSTALLATION. (QTY OF 12)
6. ONCE T-LEGS ARE ASSEMBLED TO THEIR APPROPRIATE POSITIONS ON THE TOP, ADJUST THEM TO DESIRED HEIGHTS BY LOOSENING THE ALREADY ENGAGED 3/16" ALLEN HEAD SET SCREW. SET SCREW NEEDS NO MORE THAN 0.250" TO LOOSEN. (SEE SHEET 2)
7. ADJUST INSERT TO APPROPRIATE POSITION ENSURING THAT THE CORRESPONDING HOLE DESIRED FROM THE INSERT IS IN ALIGNMENT WITH SET SCREW FROM THE RECEIVER. REPEAT WITH OTHER DTLT LEG.(SEE SHEET 2)

REVISIONS			
REV.	DESCRIPTION	DATE	APPROVED
01	REMOVED "QTY" SET SCREW FROM NOTES	7/21/2022	



ITEM NO.	COMPONENT	DESCRIPTION	QTY.
1	DTLT INSERT & RECEIVER	DTLT INSERT & RECEIVER W 3/16" ALLEN HEAD SET SCREWS	2
2	DTLT.HDW.PACK	DTLT T-LEG PACK HDW	1
	809025	PHILLIPS ROUNDED HEAD SCREWS FOR SHEET METAL	32
	809001	ALLEN WRENCH	1

CONFIDENTIAL: <small>THIS DRAWING CONTAINS CONFIDENTIAL INFORMATION WHICH IS THE EXCLUSIVE PROPERTY OF ARTCO-BELL CORPORATION. IT MAY NOT BE REPRODUCED, USED OR DISCLOSED WITHOUT WRITTEN PERMISSION OF SAID COMPANY.</small>		 1302 industrial boulevard • temple, tx 76504 • www.artcobell.com	
DWN. BY: VJENKINS	DATE: 07/13/2022	TITLE: DTLT T-LEG INSTALLATION DTLT-011 WI	
CHKD BY: RSPATZIER	DATE: 07/13/2022		
ENG: KTAYLOR	DATE: 07/13/2022		
MATERIAL: (SEE BOM)	PART No.: (SEE BOM)	DO NOT SCALE DRAWING	DWG SIZE: <b>A</b>
		SHEET 1 OF 2	



DETAIL B

