

# Café Table

## Tops

1-1/8" Particleboard Core with Flat Banded Edge

The Top is constructed of a solid core 1 1/8" particle board surfaced with high-pressure laminate and a backer sheet for balanced construction and minimize warping. Flat vinyl edge is secured to the perimeter of the top.

## Bases, X-Base

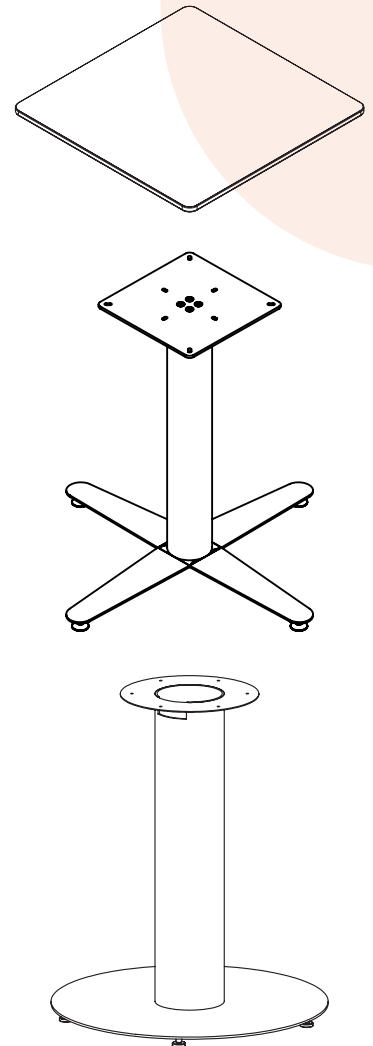
Hardware, 30" base and 12"x12" plate are packaged together. Column is shipped separately. Column is 4" diameter, 14-gauge round steel tube in (3) heights (30", 36" and 42"). Main bar/foot X-Base is laser cut and welded 7-gauge steel. Nylon leveler glides are 5/16"-18" x 1/2" long threaded stem with black nylon end. Mounting plate is 1/4" thick steel. Assembly method: set of four (4) 8mm bolts both at the top and bottom of each column. Laminate tops are attached using six #12 x 3/4" Pan Head screws per mounting plate.

## Disc Base

Columns feature a 6" diameter steel tube. Columns have a 1-1/2" x 3" slot at the top of the column for easy cord access. Welded to the top of the column is a 12" diameter 14-gauge mounting plate to allow attachment to laminate tops. Laminate tops are attached using six #12 x 3/4" Pan Head screws per mounting plate. Base plates feature an 18" or 24" diameter 6-gauge steel plate with weld nuts for adjustable glides welded to the bottom. Five 1/2" adjustable leveling glides are standard with a 1/4" adjustment range. Glides are available in nylon. Cafe table bases are available in 30" and 42" fixed heights. Bases and tops are specified and ship separate. All tops require field installation.

## Compliance

- > Tested to applicable ANSI/BIFMA Furniture Standards
- > Indoor Advantage™ Gold. Indoor air quality certified to SCS-EC10.3-2014

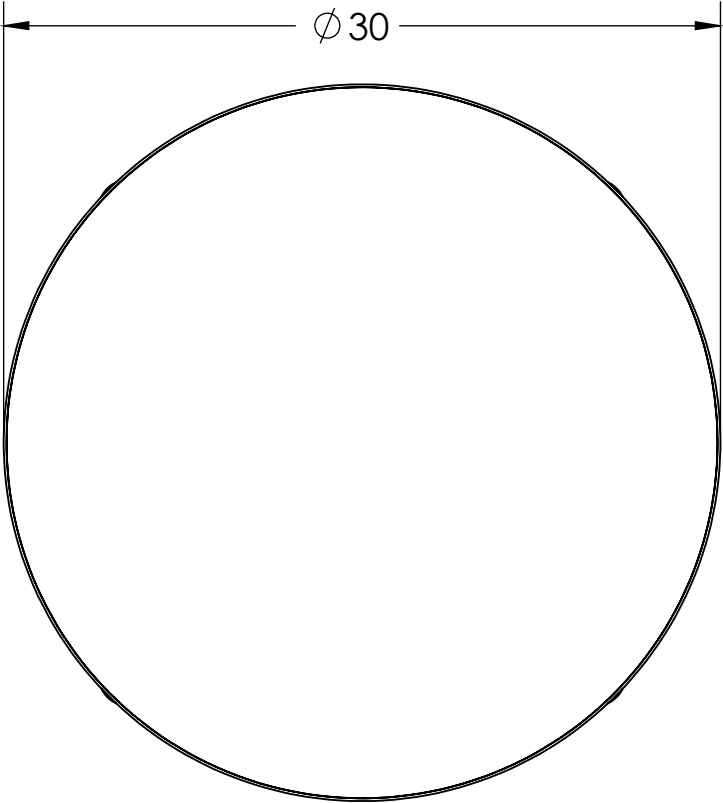


MODEL	WIDTH – BASE	HEIGHT – BASE
Base Assembly   30" Table Height		
DCBR-1830.4	18.0"	28.82"
DCBR-2430.4	24.0"	28.82"
Base Assembly   42" Table Height		
DCBR-1842.4	18.0"	40.82"
DCBR2442.4	24.0"	40.82"

Learn more at [artcobell.com](http://artcobell.com)

# Cafe X-Base

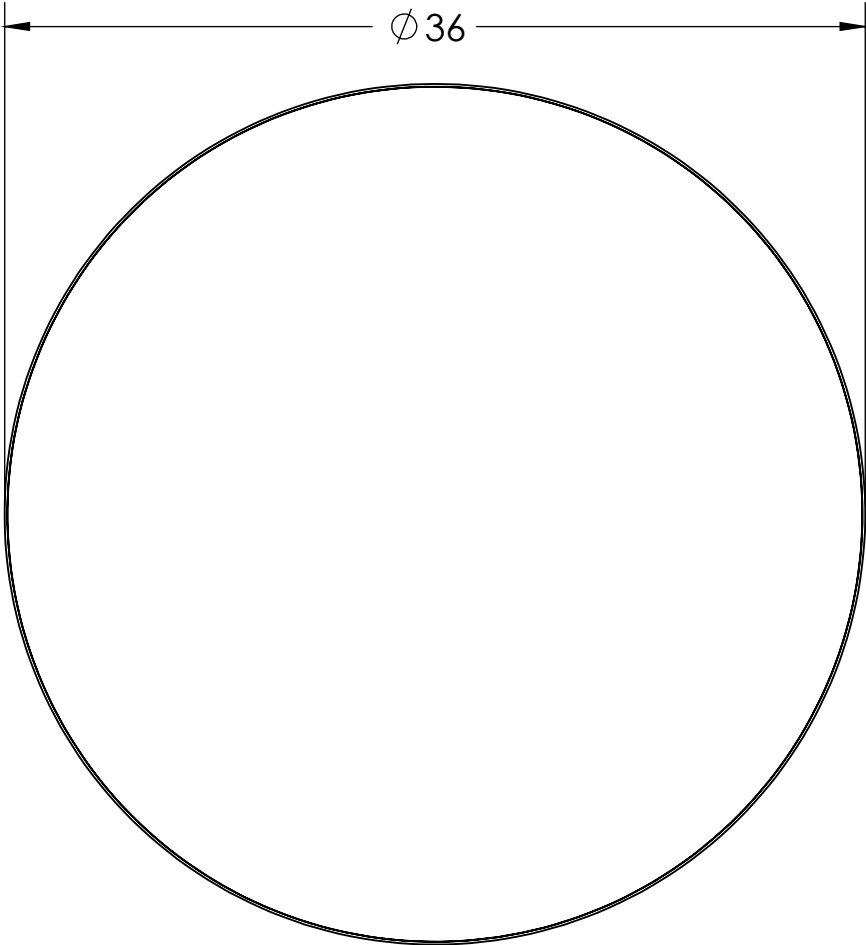
## Round 30"



MODEL	DIAMETER
DCT-RD30F	30.0"
DCT-RD36F	36.0"
DCT-RD42F	42.0"

# Cafe X-Base

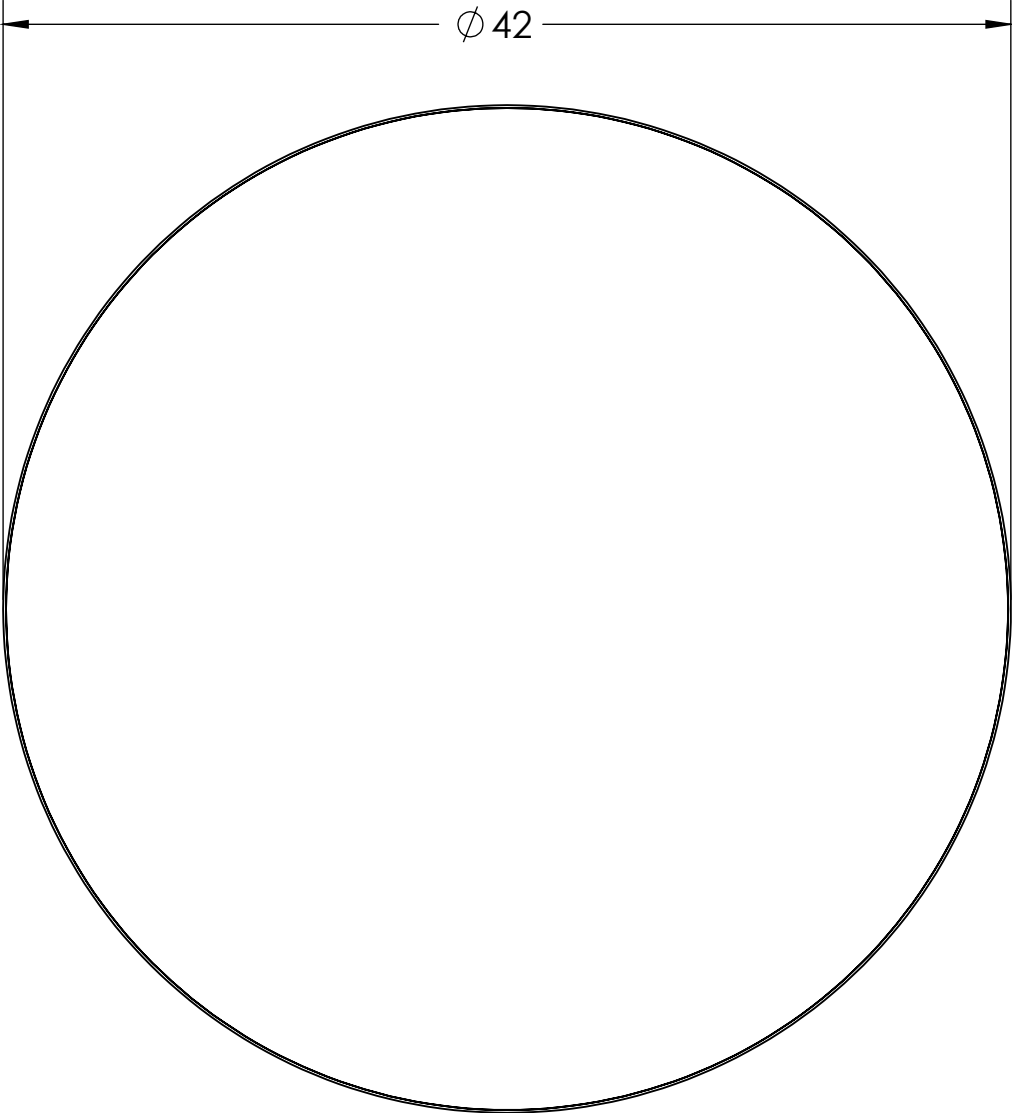
## Round 36"



MODEL	DIAMETER
DCT-RD30F	30.0"
DCT-RD36F	36.0"
DCT-RD42F	42.0"

# Cafe X-Base

## Round 42"

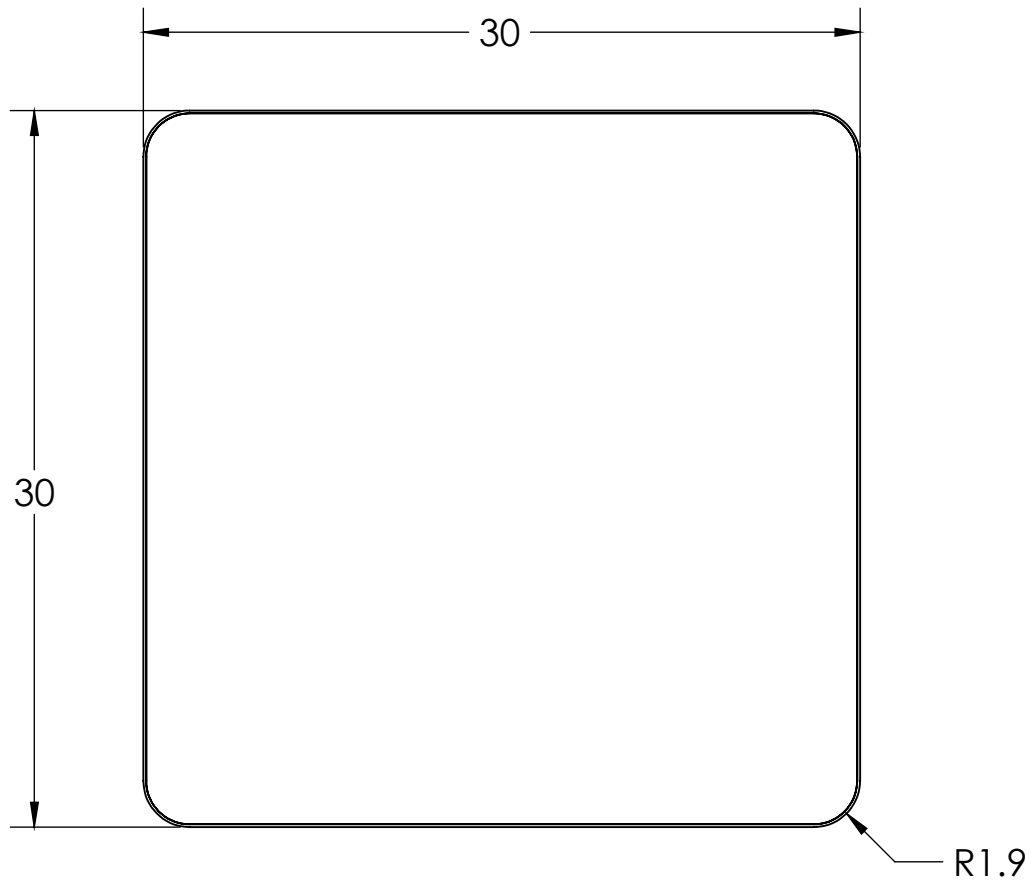


MODEL	DIAMETER
DCT-RD30F	30.0"
DCT-RD36F	36.0"
DCT-RD42F	42.0"

Learn more at [artcobell.com](https://artcobell.com)

# Cafe X-Base

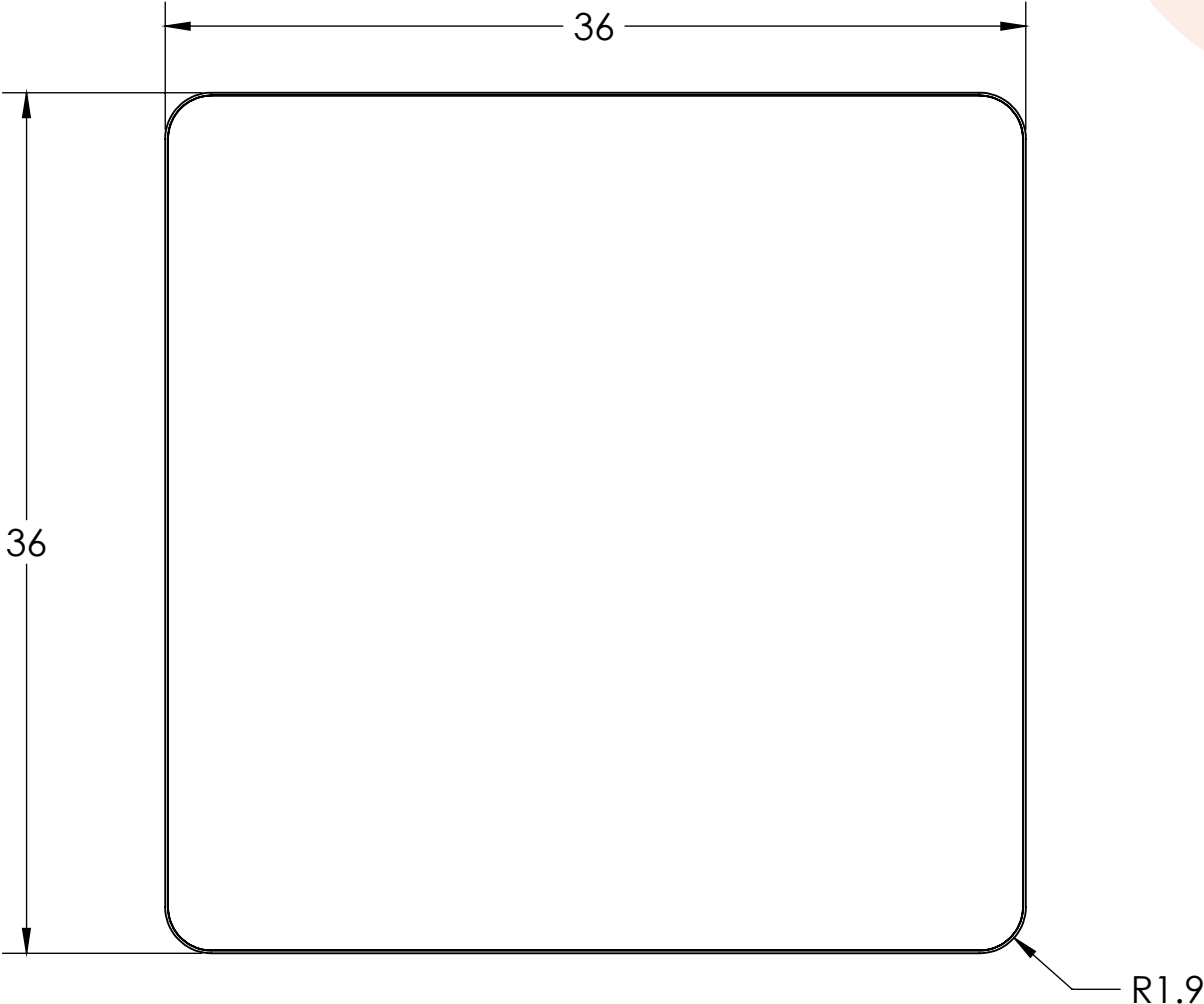
Square 30"



MODEL	WIDTH	DEPTH
DCT-SQ30F	30.0"	30.0"
DCT-SQ36F	36.0"	36.0"

# Cafe X-Base

## Square 36"

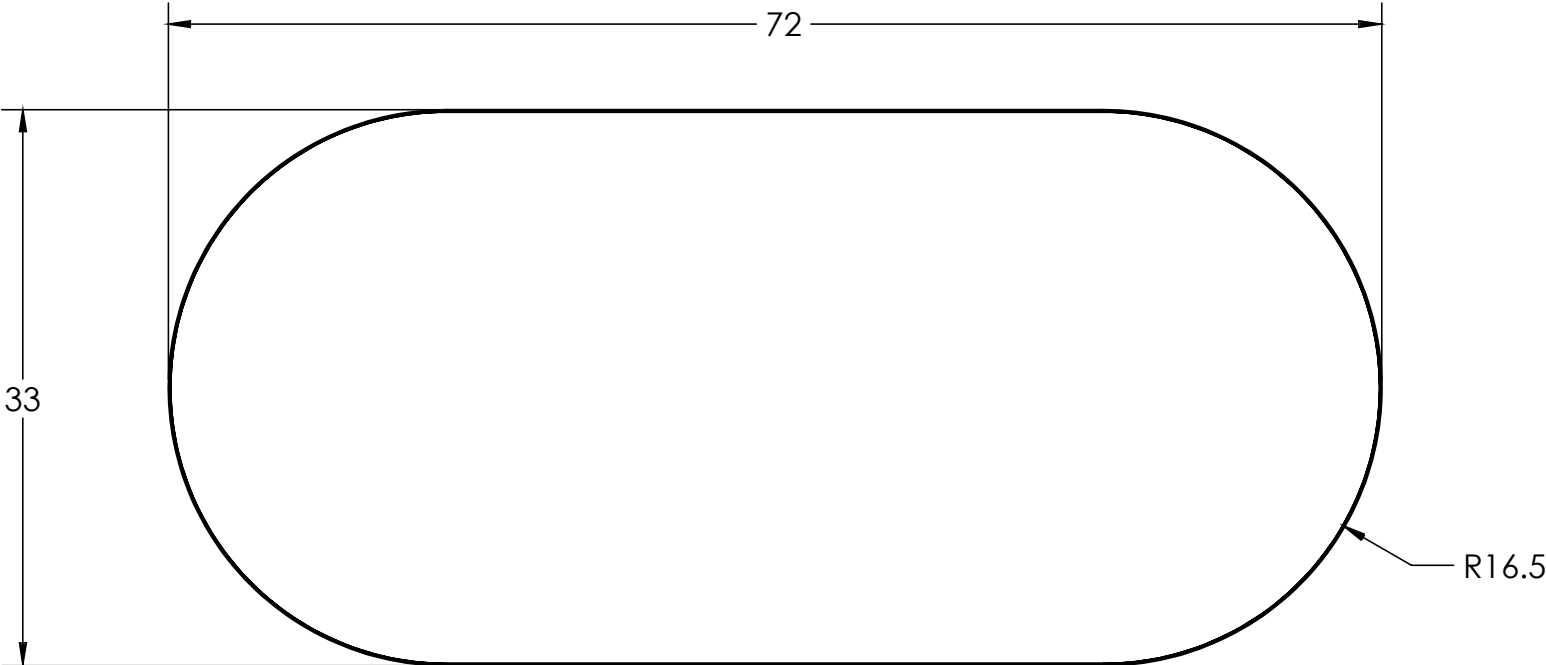


MODEL	WIDTH	DEPTH
DCT-SQ30F	30.0"	30.0"
DCT-SQ36F	36.0"	36.0"

Learn more at [artcobell.com](https://artcobell.com)

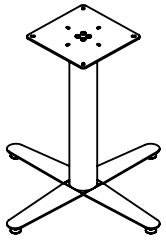
# Cafe X-Base

## Racetrack



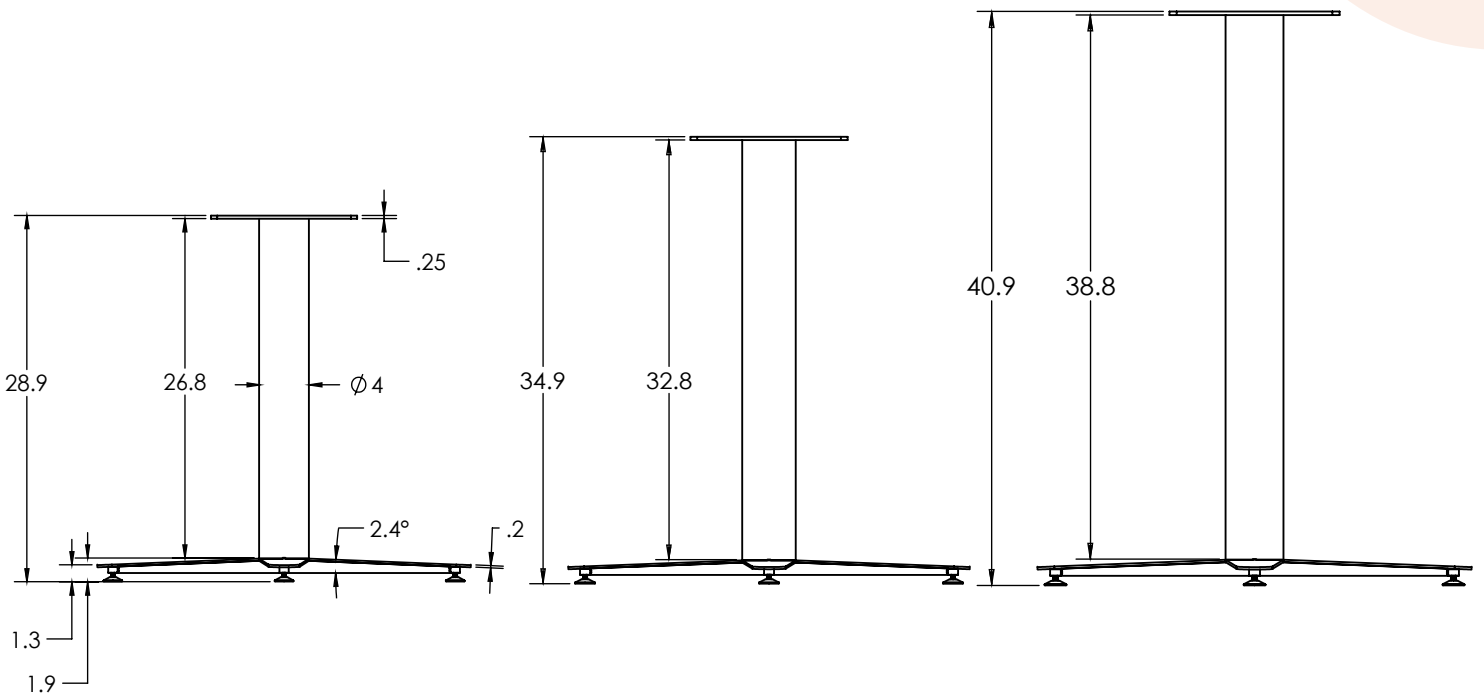
MODEL	WIDTH	DEPTH
DCT-RT3372F	72.0"	33.0"

Learn more at [artcobell.com](https://artcobell.com)



# Café Base

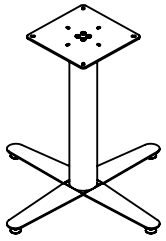
## X-Base



MODEL	WIDTH - BASE	ASSEMBLED HEIGHT
X-Base Assembly   30" Table Height		
DCBX-3030	22.0"	30.0"
X-Base Assembly   36" Table Height		
DCBX-3036	22.0"	36.0"
X-Base Assembly   42" Table Height		
DCBX-3042	18.0"	42.0"

Learn more at [artcobell.com](https://artcobell.com)





# Café Base

## X-Base

