

Teacher Podium

Top

Top is constructed of a 1 1/8" thickness 45# particleboard core with high-pressure laminate (HPL) top surface and phenolic backer sheet for balanced construction. 1 1/8" 3mm flat vinyl edge is secured throughout the perimeter of the top to prevent the edge from pulling away. The unique 28" x 36" NXT MOV curved top is specifically shaped to echo the fully welded frame. #12 X 1" philips pan head screws are used to attach top to frame. Cable release handle with unintentional-release-resistant lever connects to a release cable 33-5/8" length for optimal placement.

Frame

The frame comprises a 4" diameter adjustable height column with a range of 24"-46" (top of base plate to bottom of top) and U-shaped foot made of 2" 16-gauge CNC mandrel-bent steel tube which houses a pneumatic assist cylinder. A 12" x 12" steel mounting plate supports the top. Column is attached to base and top using 8mm bolts. Frame is offered in Titanium and Black powder-coated paint finishes. Four (4) 75mm NXT MOV locking casters are standard.

Accessories

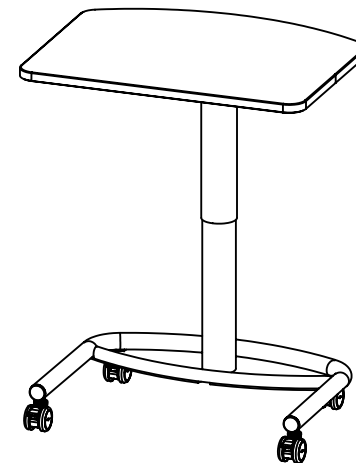
Compatible with Artcobell's Tray/Rail System (TA-TTR) and Poly Book Box (TA-BBP16). Field-installation required.

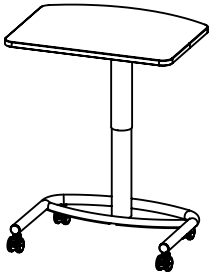
Shipping

Unit ships knocked-down (KD) and requires field installation.

Compliance

- > Meets or exceeds applicable ANSI/BIFMA test standards
- > Indoor Advantage™ Gold. Indoor air quality certified to SCS-EC10.3-2014



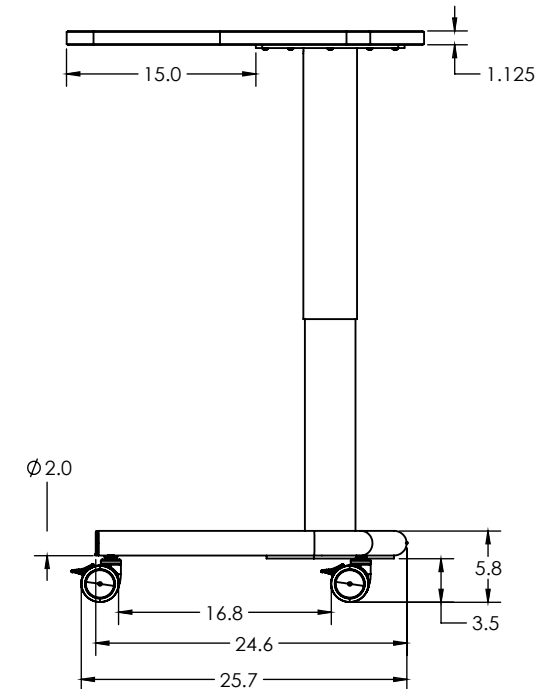
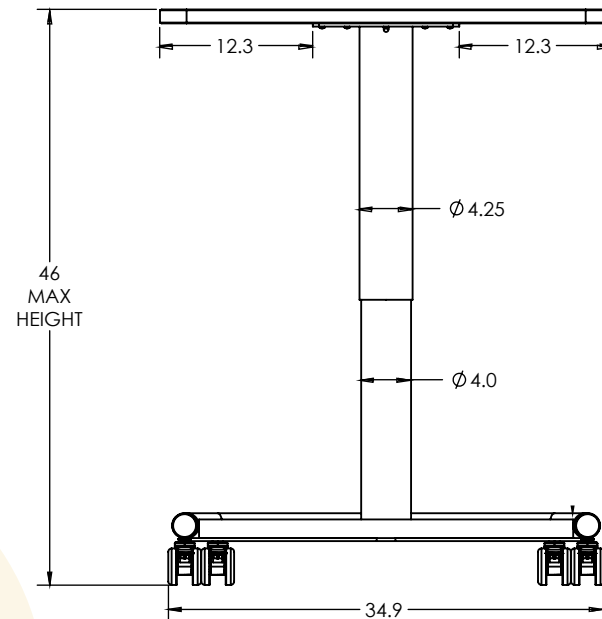
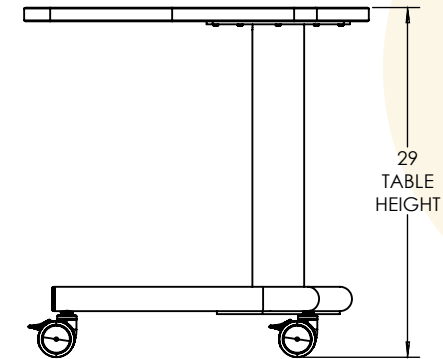


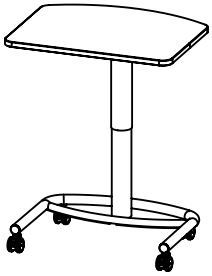
Teacher Podium Teacher Station

MODEL	TOP DEPTH"	TOP WIDTH"	TOP HEIGHT"	OVERALL FOOTPRINT"	D.B.L. "
NP2836	28"	36"	24"-46"	28.8" x 36.3"	29.7"

"Notes

D.B.L. — distance between legs"





Teacher Podium Teacher Station

